

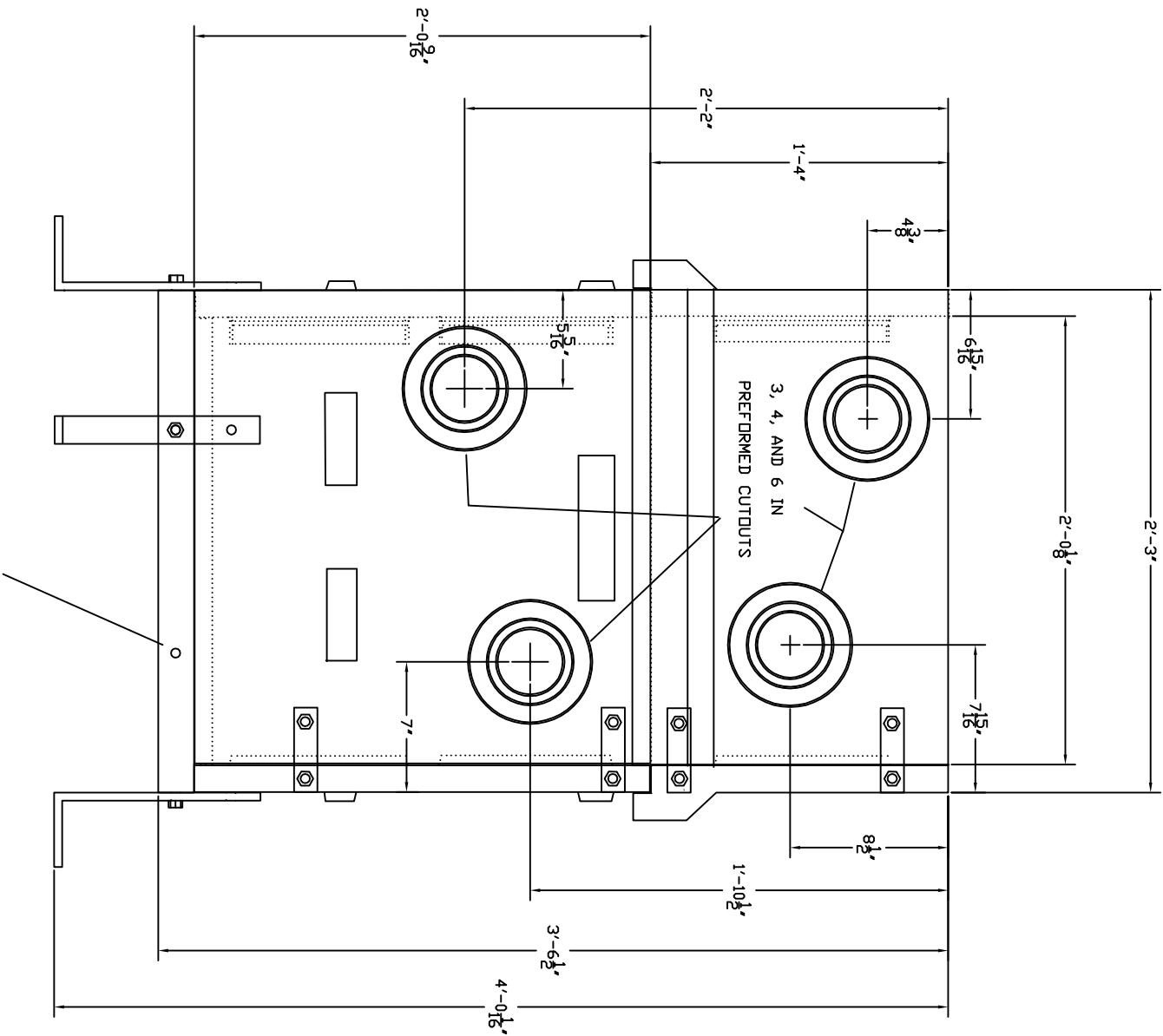
NOTE:

FRAME AND GRATE COVER REQUIRED

ALL FASTENERS ARE 0.5 IN DIA. X 1.5 IN
HEX HEAD BOLTS UNLESS OTHERWISE NOTED

ALL SAND TRAPS ARE ORIGINALLY EQUIPPED
WITH FOUR (4) INSTALLATION SUPPORTS .
AN ADDITIONAL FOUR (4) SUPPORTS MAY
BE ADDED FOR INSTALLATION IN POOR
SUBGRADE SUPPORT SITUATIONS

ALL PREFORMED CUTOUTS ARE FOR SCHEDULE
40 PIPE



OPTIONAL INSERT FOR USE WITH 8 INSTALLATION FEET



ABT
POLYDRAIN #625
SAND TRAP

DATE	08/21/03
SCALE	NONE
REVISION	C-
ST-625	

Proprietary rights of ABT, Inc. are included in the information disclosed herein. The recipient, by accepting this document, agrees that neither this document nor the information disclosed herein nor any part thereof shall be copied, reproduced or transferred to others for manufacturing or for any other purpose except as specifically authorized in writing by ABT, Inc.

DISCLAIMER: The customer and the customer's architect, engineers, consultants and other professionals are completely responsible for the selection, installation, and maintenance of any product purchased from ABT, Inc. and EXCEPT AS EXPRESSLY PROVIDED IN ABT'S STANDARD PRODUCT FOR CUSTOMER'S APPLICATION. Copies of ABT's standard warranties are available upon request.